

imagine  
extraordinary

ES | Prestige

The Prestige collection was developed in collaboration with leading architects and designers who specialize in modern construction. The result: clean lines and large glass panels.

Since 1983 as a window and door manufacturer have allowed us to develop this premier line of products that meet the highest performance standards. These products are crafted with one purpose: to bring the topmost quality and design to every project.

**Prestige products meet today's top architectural trends:**

Narrow sightlines

Superior energy efficiency

Hurricane resistance

Custom colors

Insulating glass and thermally broken aluminum

Corrosion-resistant hardware for coastal applications

**Residence, Tampa FL**





## Prestige Features

- Consolidated under a single source warranty
- Available in two-tone finish
- High performance insulation from efficient spacers
- Superior energy performance with low U-values
- Reduced sound transmission
- Exclusive hardware
- Extended warranty
- Color or ultra-clear interlayers
- Coastal hardware standard
- Kynar Paint finish as standard – 15 year warranty

Residence, Palm Beach FL

## Windows

- ES-P300 Casement/Awning/Fixed Window
- ES-FX3050 Frameless Window Wall
- ES-8000T Storefront Window
- ES-FX4017 Fixed Window

## Doors

- ES-46T Swing Door
- ES-PSD5030T Entry Door
- ES-SGD2020 Sliding Glass Door
- ES-SGD2020T Sliding Glass Door Thermal
- ES-SGD1010T Sliding Glass Door
- ES-PGD3040 Garage Door
- ES-BF5010T Bifold Door





Design. Quality. Luxury.



# Windows

## ES-P300

### Casement / Awning / Fixed Window

The ES-P300 window was designed to get a historic look with its beveled frame while improving the energy efficiency of buildings, maintaining the capability to resist hurricane impacts.



### System Description

- Fixed, awning and casement configuration
- Small and large missile impact rated
- AAMA: AW-PG100
- Maximum panel size: 57" width x 96" height
- Frame depth: 3"
- Sightline:
  - 1 3/4" fixed window
  - 3 3/16" project-out window
- Tested water infiltration: 12 psf.
- Design load:
  - +80/-90 psf (impact version)
  - +/-100 psf (non-impact version)
- U-value:
  - Fixed: 0.295
  - Casement: 0.402
  - Awning: 0.408
- SHGC:
  - Fixed: 0.355
  - Casement: 0.275
  - Awning: 0.276

### Features

- Thermal break system for improved performance and insulation
- Beveled frame and muntin
- Applied exterior muntins, muntins between the glass grid and integral mullions
- Available with receptor system and 3-piece mullion
- Euro-groove to fit multiple hardware options
- Optional roto-operator to meet ADA requirements

## ES-FX3050 Frameless Window Wall

The ES-FX3050 frameless window is a glass wall that has no vertical aluminum profiles. The result is more glass and an unobstructed view.

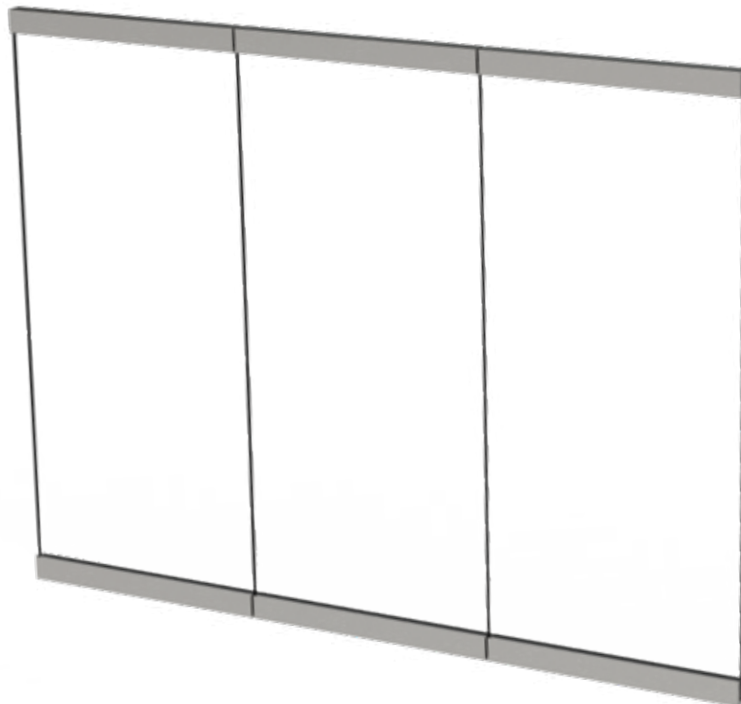


### System Description

- Large missile impact rated
- Maximum size: 97 1/2" width x 192" height
- Frame depth: 3 3/8"
- Shoe height: 4 3/4"
- 1 1/8" laminated glass
- Tested water infiltration: 15 psf.
- Tested design load: +/- 100 psf.

### Features

- Top and bottom rail options
- Multiple module option available
- Corner option available.



## ES-8000T Storefront Window

The ES-8000T / 8000T Jumbo is an impact resistant, thermal storefront system. This product uses pour and debridge thermal break for superior thermal performances. Standard 8000T is compatible with our ES-9000 impact door.



### System Description

- Large missile impact rated
- Maximum panel size:
  - 60" width x 144" height (ES-8000T)
  - 84" width x 180" height (ES-8000T Jumbo)
- Tested design load: +90/-120 psf (ES-8000T)  
+/-70psf (ES-8000T Jumbo)
- Tested water infiltration: 12 psf.
- U-value: 0.43 on clear insulating laminated SB 70
- SHGC: 0.24 on clear insulating laminated SB 70
- Tested air infiltration: 6.24 psf.

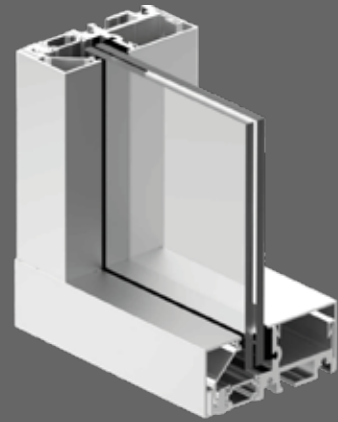
### Features

- Screw cover
- Integral door adaptor
- Pre-assembled and pre-glazed
- Surface applied ogee or flat muntins
- Thermally broken frame



## ES-FX4017 Fixed Window

The ES-FX4017 fixed window features minimal sightlines between large, jumbo-sized glass panels, for a seamless transition. Enjoy unobstructed views while benefiting from industry-leading performance. This window can meet impact certification, ensure thermal performance for colder climates, and adheres to the highest structural ratings, air, water standards in the market.

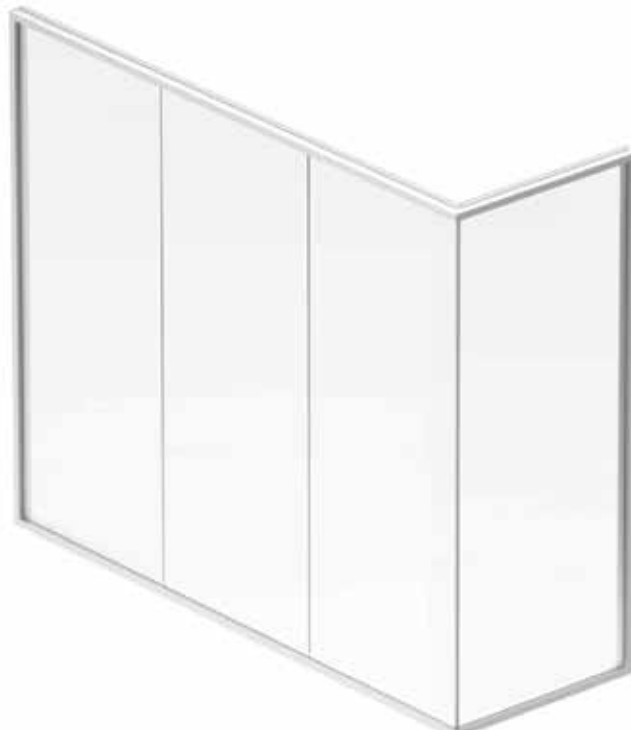


### System Description

- Seamless glass system
- Designed for 3/4" laminated glass to 1 3/8" insulating glass
- Maximum panel size: 60" W x 120" H
- Shoe height: 1 3/4"
- Frame depth: 4"
- Design load impact: +95/-95 psf.
- Design load non impact: +60/-60 psf.
- U-value: 0.288
- SHGC: 0.358

### Features

- Available with or without jambs
- Corner option available
- Multiple or single module options available







# Doors

## ES-PSD5030T Entry Door

The ES-PSDF5030T is a versatile Pivot and Swing Entry door system that allows multiple finish options. Designed for captured glass, ssg glass, and phenolic panel finish.



### System Description

- Pivot and French/Swing configurations available
- Frame depth: 5"
- Maximum sizes:
  - 60" width x 144" height
  - 72" width x 120" height
  - 90" width x 96" height
- Impact door
- ADA threshold
- Designed for multiple options of glass and phenolic panel

### Features

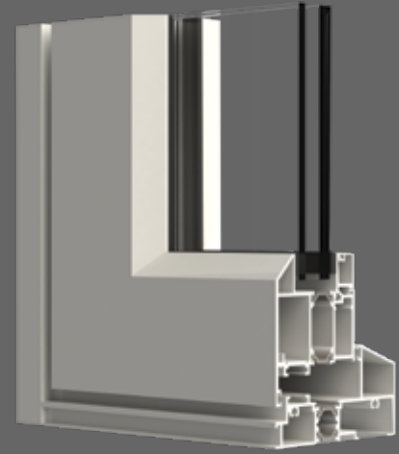
- Thermally broken system for improved performance and insulation
- Anodized, painted or wood grain finishes available
- Automatic drop-down seal to close any gap between the door and the floor/frame sill
- Damper control (soft close and wall protection)
- Hold positions at 0°, 90° and -90°
- Modular multi-point lock with electric capability (optional)
- Multifunction die-cast aluminum corner joints
- Self-closing pivot hinge.





## ES-46T Swing Door

ES-46T is an out-swing door designed for balconies and open spaces. It pairs easy operation with a sophisticated modern look.



### System Description

- Small and large missile impact rated
- Maximum size for single door:
  - 41 3/16" width x 108" height
  - 41 3/16" width x 120" height
  - With transom: 41 3/16" width x 134" height
- Maximum size for double door:
  - 80" width x 98" height
  - 76 1/2" width x 120" height
  - With transom: 80" width x 134" height
  - With sidelites: 98" width x 160" height
- Frame depth: 4 1/2"
- Standard threshold height: 2 1/4"
- ADA threshold height: 1/2"
- Tested water infiltration: 15 psf.
- Tested design load: +100/-120 psf.
- U-value: 0.44 on clear insulating laminated SB 70
- SHGC: 0.21 on clear insulating laminated SB 70

### Features

- ADA threshold and high bottom rail optional
- Multi-point hardware
- Thermally broken frame



## ES-SGD2020 Sliding Glass Door

The ES-SGD2020 is an impact-rated sliding glass door with minimal sightlines. This narrow door features less aluminum and more glass than others allowing a clearer view.



### System Description

- Large missile impact rated
- Maximum panel size:
  - 72" width x 120" height
  - 60" width x 144" height
- Frame depth: 4 3/8" (2 track), 6 7/16" (3 track), 8 1/2" (4 track), 10 9/16" (5 track)
- Sill height: 1 7/8"
- 90 degree and 135 degree corners
- 2" interlocks
- Tested water infiltration: 12 psf.
- Tested design load:
  - Min. DP: +/-65 psf.
  - Max. DP: +90/-102 psf.
- U-value: 0.57 on clear insulating laminated SB 70
- SHGC: 0.23 on clear insulating laminated SB 70

### Features

- Multiple panel configurations
- Removable sill riser painted to match the door
- Needle bearing acetal roller
- Standard contemporary handle & thumb turn
- 2 point locking hardware
- Multiple track options
- Pocket configuration



## ES-SGD2020T Sliding Glass Door Thermal



### System Description

- Small and large missile impact rated
- Designed for 1" insulating and 1 5/16" insulating laminated glass
- Maximum panel size:
  - 84" width x 156" height non-impact
  - 60" width x 132" height impact
- Panel width up to: 60"
- Panel height up to: 132"
- Design load: +/- 105 psf
- U-value: 0.34

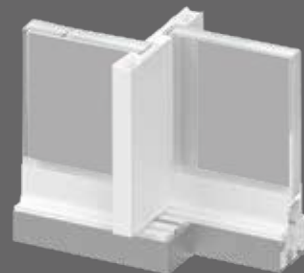
### Features

- Fully thermally broken
- High quality adjustable rollers
- 90° and 135° corner options available
- 2, 3 and 4 track options available



## ES-SGD1010T Sliding Glass Door

The ES-SGD1010T is an impact-rated sliding glass door with minimal sightlines. This narrow door features less aluminum and more glass than others allowing a clearer view.

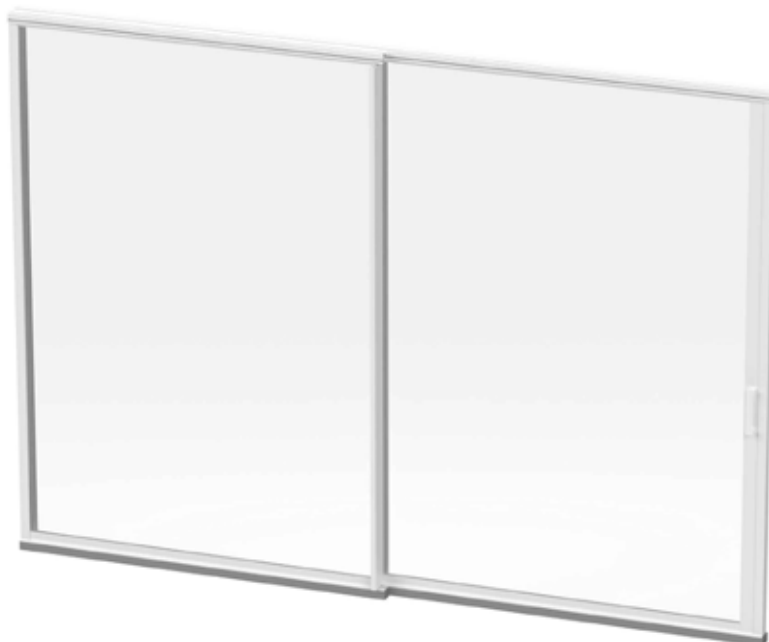


### System Description

- Designed for 1" insulated glass.
- Frame depth: Standard subsill anchor 5 3/8" (2 track), 8 3/16" (3 track), 11 1/16" (4 track), 13 7/8" (5 track)
- Cast in sill with box: 8 3/8" (2 track), 11 1/4" (3 track), 14" (4 track) 16 13/16" (5 track)
- Sill height: 1 7/8"
- Interlocks sight line: 1 1/8"
- Tested design load: +90/-90 psf.
- Tested water infiltration: 6 psf.
- Tested air infiltration: 6.24 psf.
- U-value: 0.333 N70/38
- SHGC: 0.346 N70/38
- FBC:
  - 2 track: FL 46878.1 (LMI)
  - 3 track: FL 46878.2 (LMI)
  - 4 track: FL 46878.3 (LMI)

### Features

- Narrow door with minimal sightlines
- Multiple panel configurations
- Removable sill riser
- Standard contemporary handle & turn lever
- Multiple frame options: cast in sill, subsill anchor, etc.
- Multiple track options
- Pocket configuration



## ES-PGD3040 Garage Door

Constructed of impact-resistant laminated glass and the highest-grade aluminum alloy to provide the most contemporary architectural design options.



### System Description

- Frame depth: 3"
- Sightline: 4 1/2"
- Designed for 5/16", 7/16", 9/16" laminated glass
- Maximum size: 222" width x 168" height

### Features

- Long lasting silicone weather-seals
- Stainless steel hardware components
- Premium nylon rollers with 3/4" stainless steel shaft
- Industrial grade stainless steel cables (5/32" & 3/16")
- Innovative panel-to-panel anti-deflection interlocking system
- Heavy-duty full angle tapered track (powder coated track options available)
- Available in multiple lite configurations (max single lite 144")
- Internal reinforcement adds maximum strength without sightline interference
- Available in standard, low-headroom, high-lift, and vertical track configurations



## ES-BF5010T Bifold Door

The ES-BF5010T bifold door allows you to join two spaces effortlessly. The system provides a completely clear opening with a maximum of 120" in height.



### System Description

- Multiple panel size: 42" width x 120" height
- Maximum 16 panels center meet
- Frame depth: 5"
- Threshold height: 2 1/2"
- Designed for insulating laminated glass and laminated glass
- 2" threshold for maximum water infiltration protection
- Tested water infiltration: 15 psf.
- Tested design load: +95/-95 psf.
- U-value: 0.77 on clear insulating laminated SB 70
- SHGC: 0.17 on clear insulating laminated SB 70

### Features

- Thermally broken frames
- ADA sill option
- BF5010T hinges and pull mechanism come in stainless steel



# Accessories

## Design Elements

The Prestige line pairs fine architectural details with uncompromising performance.

Every Prestige window and door is produced with the finest materials, using the latest technologies and benefiting from the skilled talent of our experienced team. The result is an aesthetic design with engineered precision and proven performance.

## Colors and Finishes

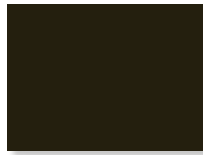
### Color Options



Silver



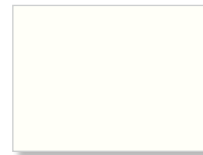
Dark Gray



Bronze



Black



White

### Wood Grain Finishes



Embero



Nogal



Sapely

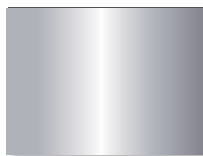


Teka

### Hardware Finishes



Bronze



Silver



White



Black

# Hardware



**Roto Operator**  
Operable Windows



**Aria Handle**  
Swing Doors



**Crest**  
Sliding Glass Doors



**Invisio**  
Sliding Glass Doors

## Engineering and Design

We specialize in providing solutions for the most complex projects and responding efficiently to the requests of architects and developers. The combination of advanced software technology and a team of engineers and designers who specialize in aluminum, glass, window systems and façades, allow us to ensure delivery of high quality products that exceed our customers' expectations.

The Prestige line provides the perfect combination of luxury, design and performance across a wide range of product types. Whether you are looking for noise reduction, temperature control, or protection from extreme weather, our line of products can provide the perfect solution, without sacrificing aesthetics.

## Service

Our engineers and designers provide ongoing assistance and technical support to ensure the best solution for each type of project. We offer each customer complete and personalized guidance, pointing out the main factors to consider in order to plan and carry out their construction with maximum benefits.



Design. Quality. Luxury.



## Featured Residential Lines

### ES | Prestige

**Prestige:** designed for sophistication and style. Each piece is carefully manufactured and checked for quality, ensuring full functionality and the ultimate end-user experience. Luxury windows and doors built to the highest specifications meeting our exceptional standards.

### ES | Multimax

**Multimax:** developed for multi-family projects with high security measures in collaboration with leading architects and designers.

### ES | Elite

**Elite:** The E-Line is the ideal solution for any homeowner who wants to blend comfort with modern design. It features superior thermal performance and an impeccable clean design with no visible installation anchors. A wide variety of options, including fixed, single hung and sliding windows, as well as swing and sliding doors, are available to meet specific design intents and performance needs, while satisfying the style needs of the most demanding homeowners.

The information contained herein is exclusive property of ES, who reserves the right to modify it, including but not limited to the designs and its specifications, without notice. 2025 ES.

**All rights reserved.**

**V- Oct 2025**



# ES