

imagine
extraordinary

ES | Legacy

An aerial photograph of a large industrial complex, likely a manufacturing plant. The facility consists of numerous large, white, rectangular buildings with flat roofs, some of which have solar panels installed. A prominent feature in the foreground is a large, colorful, abstract sculpture made of many small, square tiles in various colors (red, orange, yellow, green, blue, purple). The sculpture is situated in a landscaped area with green grass and a paved walkway. In the background, there are more industrial structures, including tall chimneys and a large body of water. The overall scene is a mix of industrial and modern architectural elements.

A Culture of Quality and Innovation since 1983

For over 40 years, ES has redefined what's possible in residential design. We craft high-performance windows and architectural systems that seamlessly blend striking aesthetics with exceptional durability and energy efficiency. Our solutions are designed to elevate every space—offering expansive views, smooth indoor-outdoor transitions, and industry-leading thermal and acoustic performance.

With vertically integrated manufacturing and an uncompromising focus on quality, every product meets the highest standards of design, performance, and reliability. Whether you're building a dream home or leading a landmark project, ES turns bold visions into lasting realities.

Timeless Design Meets Modern Performance

A modern interior space featuring a large window with a view of a desert landscape, a desk with a lamp, and a chair. The room has a minimalist aesthetic with light-colored walls and a dark desk. A large window on the left side of the frame provides a view of a vast, arid landscape with rolling hills and a clear sky. A desk lamp with a spherical shade is positioned on the desk, and a modern, ribbed chair is visible on the right. The overall atmosphere is clean, bright, and sophisticated.

The Legacy Line represents the pinnacle of architectural innovation, seamlessly integrating refined aesthetics, advanced engineering, and superior performance. Designed for visionary architects and developers, this luxury collection redefines the boundaries of contemporary design with precision-crafted windows and doors that elevate the built environment.

Every detail in the Legacy Line is meticulously engineered to meet the highest standards of thermal efficiency, structural integrity, and design versatility. With narrow sightlines, premium finishes, and cutting-edge thermal break technology, this collection ensures optimal performance without compromising on architectural expression.

Architectural Elegance Redefined

Slim sightlines. Minimalist forms that elevate space with quiet confidence and refined precision.

We offer 1/4" thick lites always as a standard — Your comfort is our priority.



Thermal Comfort, All Year Long

Advanced Thermal Break Technology delivers equilibrium within—cool when it's warm, warm when it's cool. Always composed.

Glass comes tempered as standard for strength. Your safety is not an upcharge.



Engineered for Modern Living

Acoustic purity that honors the stillness great architecture deserves.

All products can have laminated glass included for sound and security - Peace of mind at a reasonable price finally. Safe and sound.





Doors

ES-LG850
Multi-Slide Door

ES-LG525
Thermal Swing Door

ES-LG550
Pivot Door

ES-LG450
Bifold Door

Windows

ES-LG225
Window Wall

ES-LG250
Casement/Awning Window



ES | Doors

Doors That Elevate the Everyday





ES-LG850

Multi-Slide Door

A fully thermally broken system with seamless operation, slim sightlines, and expansive glass panels. The add-a-track design unlocks endless configurations—merging performance with panoramic elegance.



Performance & Highlights

- Multi-slide door system
- Maximum sizes:
 - 72" width x 120" height
 - 84" width x 108" height
- Frame depth:
 - 2 track: 4-3/8"
 - 3 track: 6-9/16"** Customized tracks available*
- Sightline: 1-1/8"
- Designed for 1-1/8" insulating glass
- U-Value: as low as 0.27

Features

- Fully thermally broken system
- Sill options of flush, water barrier, ADA and thinline available
- Stucco return nail fin 1" and 1-3/8"
- Flush and contemporary handles available
- With available pocketing, 90 degree, and biparting configurations
- Anodized, painted, and woodgrain finishes available

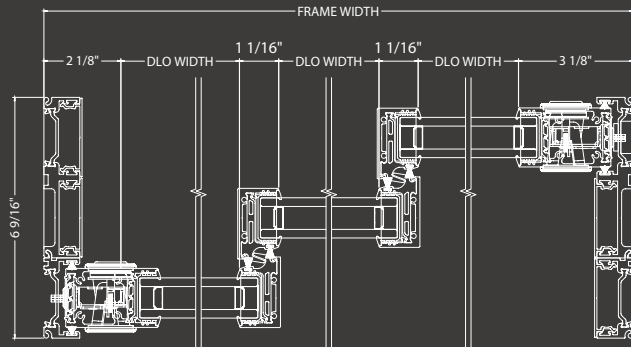


ES-LG850

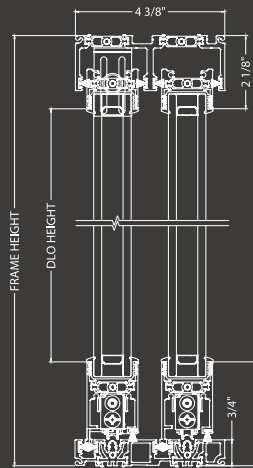
Multi-Slide Door



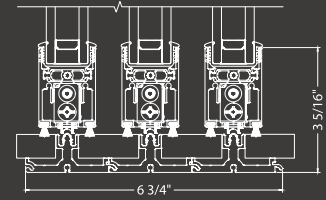
Learn More



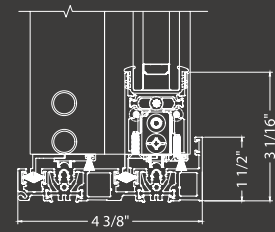
Lock Style Flush Handle



Flushsill

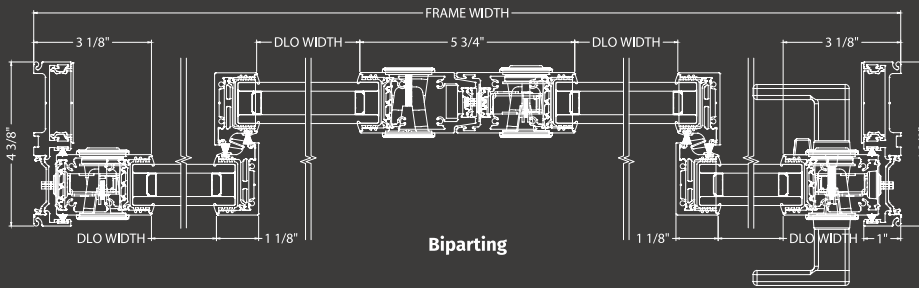


Thinline

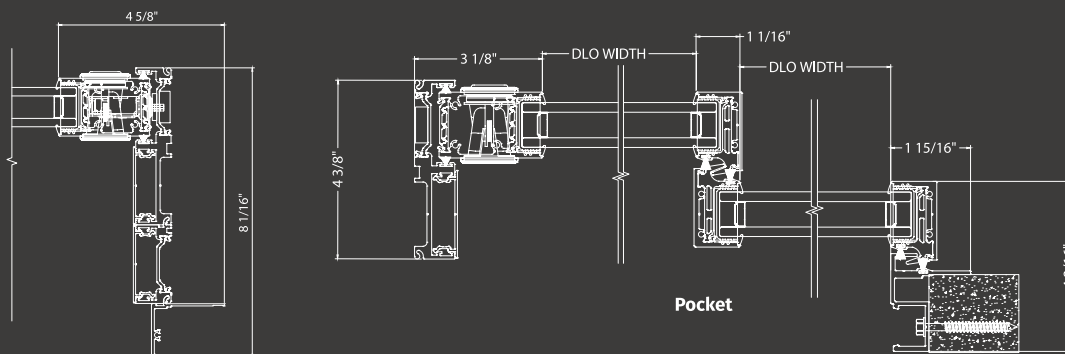


Watersill

Technical Details

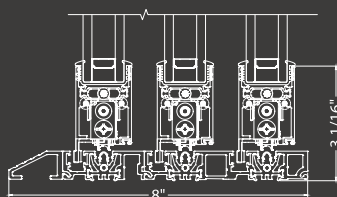


Biparting

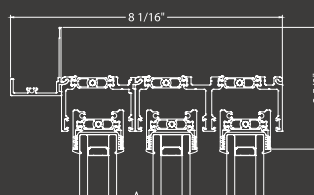


Pocket

Stucco Return



ADA Adaptor



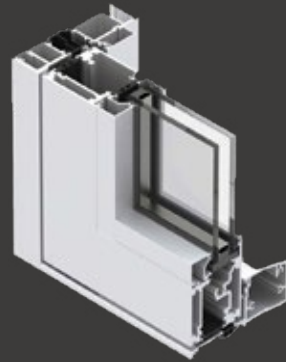
Head Stucco Return Nail Fin



ES-LG525

Thermal Swing Door

A statement of strength and style. This thermally broken swing door pairs refined design with advanced sealing and locking systems—offering elegance, security, and energy efficiency in one seamless entrance.



Performance & Highlights

- Thermal inswing and outswing door
- Frame depth: 4-1/2"
- Maximum sizes:
 - Single: 48" width x 120" height
 - Double: 96" width x 120" height
- Sightline: 3-3/4"
- Designed for 1", 1-1/4", 1-3/16" insulating glass and 1 9/16" double insulating glass
- U-Value: as low as 0.27

Features

- Standard and 5 Multipoint lock options
- Peak handle available
- Hager mortise hinge for inswing
- Anodized, painted, and woodgrain finishes available





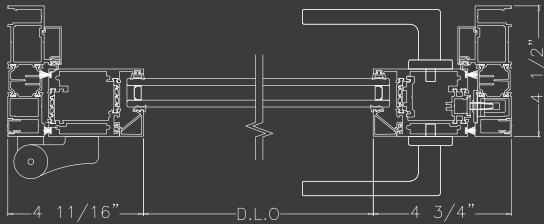
ES-LG525

Thermal Swing Door

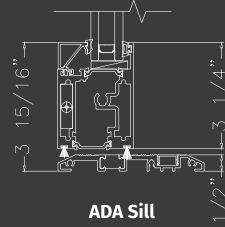


Learn More

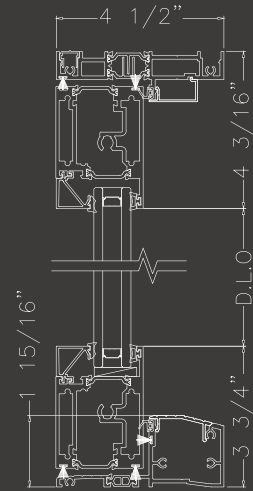
Out-Swing Configuration



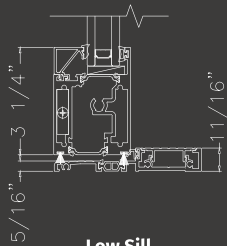
Jamb at Swing Out



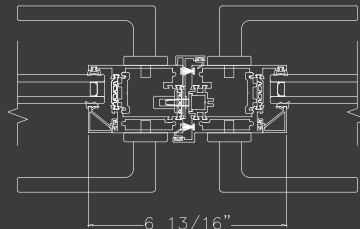
ADA Sill



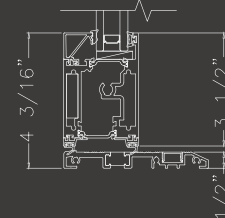
Head and Sill



Low Sill
No Water Rating

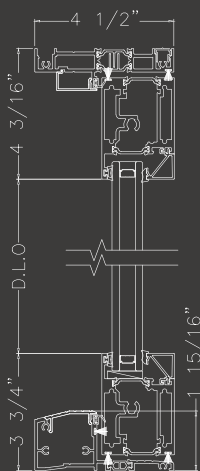


Astragal

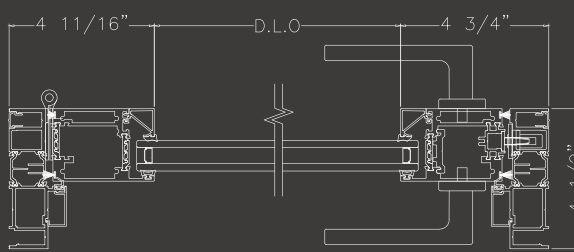


Low Sill

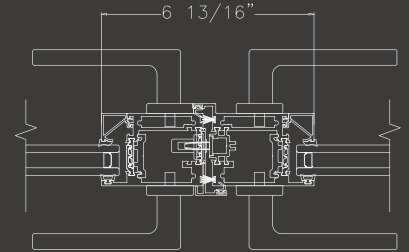
In-Swing Configuration



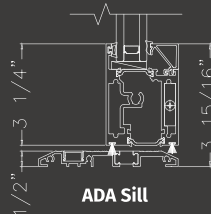
Head and Sill



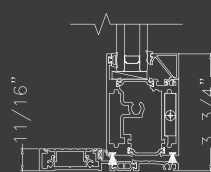
Jamb at Swing Out



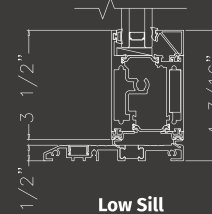
Astragal



ADA Sill



Low Sill



Low Sill
No Water





ES-LG550

Pivot Door

Bold by design, refined in motion. Our new pivot door features a concealed hinge system that delivers seamless, effortless operation while redefining the modern entryway with striking simplicity. The concealed pivot hinge disappears into the frame allowing the door to glide effortlessly while maintaining a clean, uninterrupted aesthetic.



Performance & Highlights

- Thermal pivot door
- Frame depth: 4-1/2"
- Maximum size: 72" width x 144" height
- Sightline: 4-3/4"
- Designed for 1" insulating glass
- U-Value: as low as 0.26

Features

- Nail fin and block frame available
- Ladder pull and type c-lock handle available
- Fully thermally broken
- Anodized, painted, and woodgrain finishes available
- Hinge option available

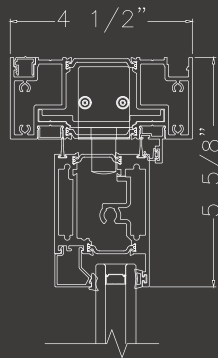
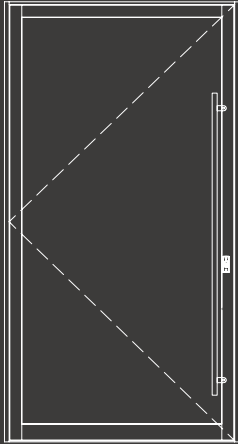


ES-LG550

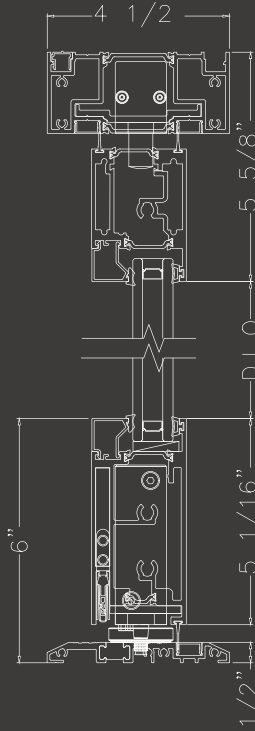
Pivot Door



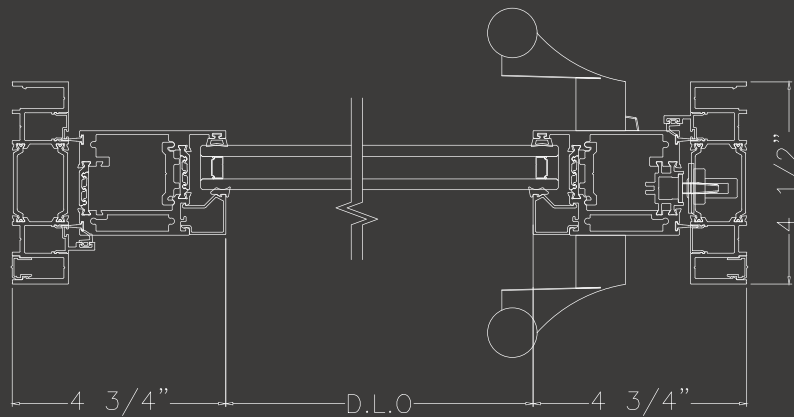
Learn More



Head with Door Stop



Head and Sill



Jamb

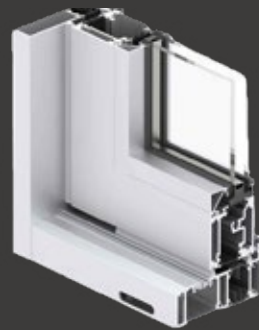




ES-LG450

Bifold Door

Sleek and contemporary, the Legacy Bifold Door features a thermally broken aluminum system for improved energy efficiency and comfort. Its smooth folding operation creates wide, unobstructed openings that connect indoor and outdoor spaces with ease. With slim sightlines and a refined architectural finish, the ES-LG450 is ideal for high-end residential applications.



Performance & Highlights

- Frame depth: 4-1/2"
- Frame Sightline for E3: 4-11/16"
- Frame Sightline for E4: 5-3/16"
- Hardware height for E3: Sill 2" and head 2-13/16"
- Hardware height for E4: Sill 2-9/16" and head 3-9/16"
- Designed for 1" insulating glass, 1-3/16" and 1-5/16" insulating laminated glass, and 1-11/16" and 1-13/16" double insulating glass.

Features

- Folding door hardware option by Centor (E3 and E4 sets available).
- Three point and two point lock mechanism.
- ADA sill available, non water resistance.
- Stacking option with ES-LG225 system.
- Lever handle available



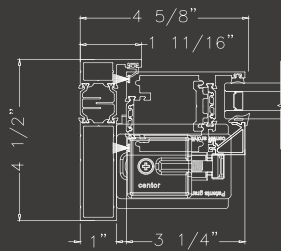
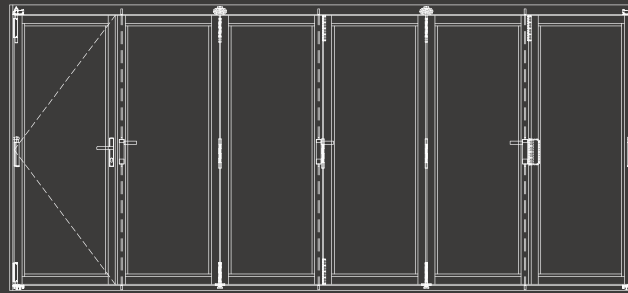
ES-LG450

Bifold Door

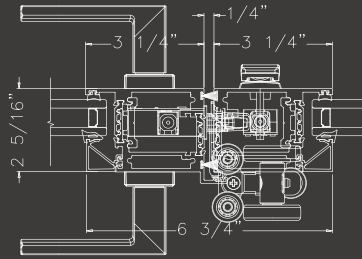


Learn More

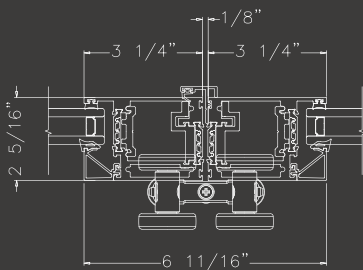
E3 Hardware Configuration



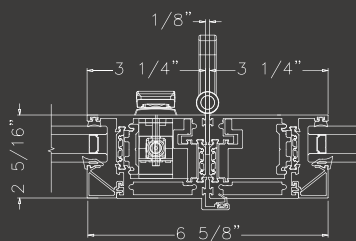
**Jamb
Pivot Set**



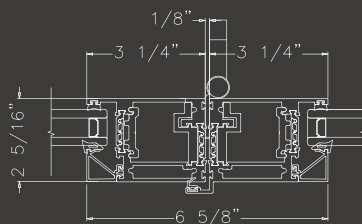
**Astragal
Left Carrier Set**



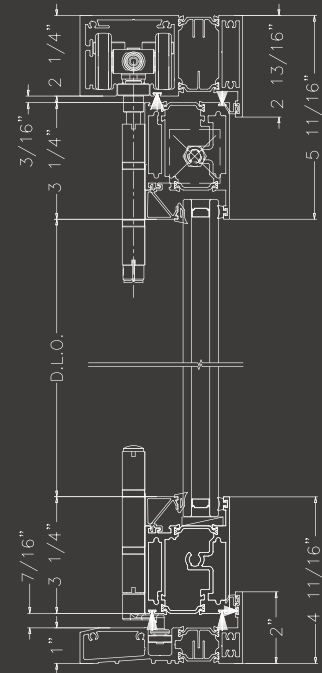
Hinge Stile



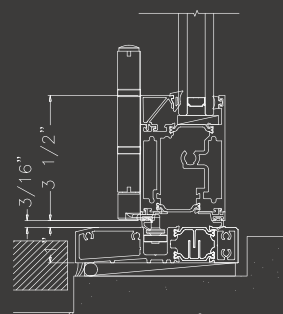
**Hinge Stile
Dropbolt 2P - Flat Hinge**



**Hinge Stile
Offset Hinge**



Sill



ADA Sill





ES | Windows

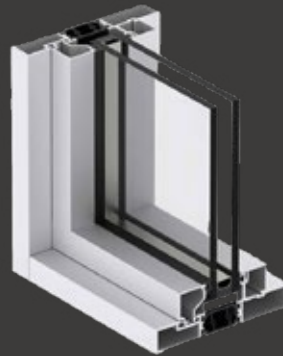
Windows that Inspire the Everyday



ES-LG225

Window Wall System

A new standard in thermal innovation. With advanced thermal breaks and a U-Factor as low as 0.19, the ES-LG225 combines exceptional efficiency with refined design—ideal for large-scale, modern applications.



Performance & Highlights

- Fixed window system
- Pre-assembled and pre-glazed
- Sightline: 1-9/16"
- Frame depth: 4-1/2"
- Maximum sizes:
 - Single Panel: 72" width x 144" height
 - Mulled panels: 60" width x 120" height
- Designed for 1" and 1-1/4" insulated glass; 1-9/16" and 1-19/32" double insulated glass
- Test configuration: 60" x 120"
- CSA A440 Air: Fixed
- U-Value: as low as 0.16

Features

- Flush frame and fin frame
- Stacking panels available
- Vertical and horizontal intermediate for multiple lites
- Fully thermally broken
- Anodized, painted, and woodgrain finishes available
- High base sill available

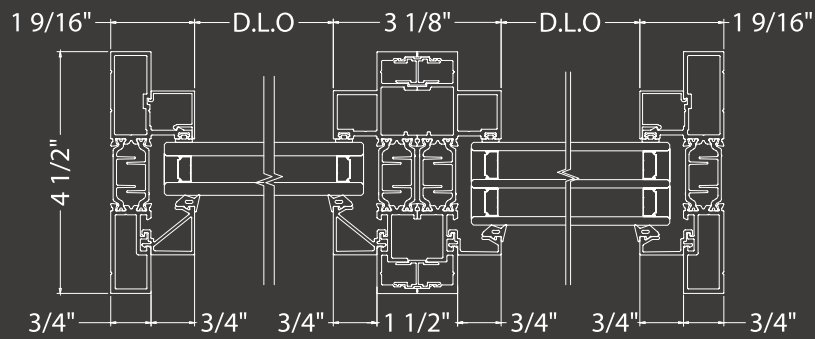
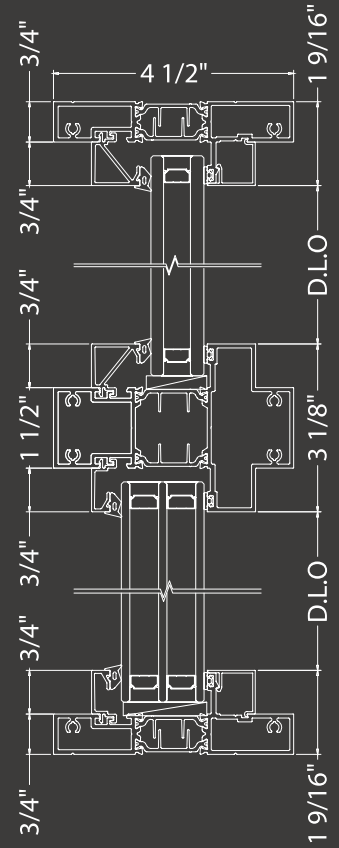
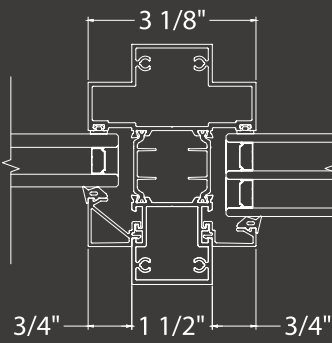
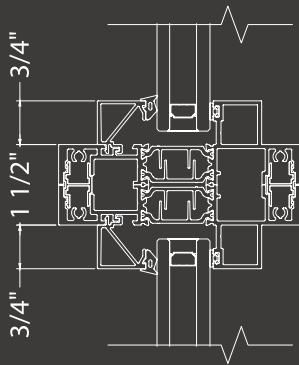
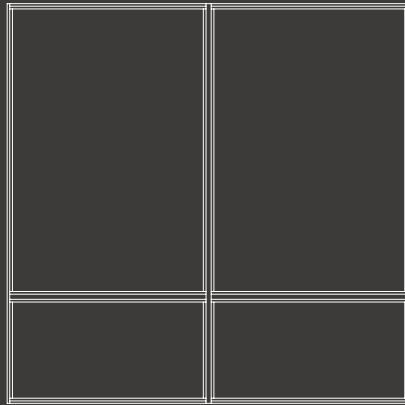


ES-LG225

Window Wall



Learn More

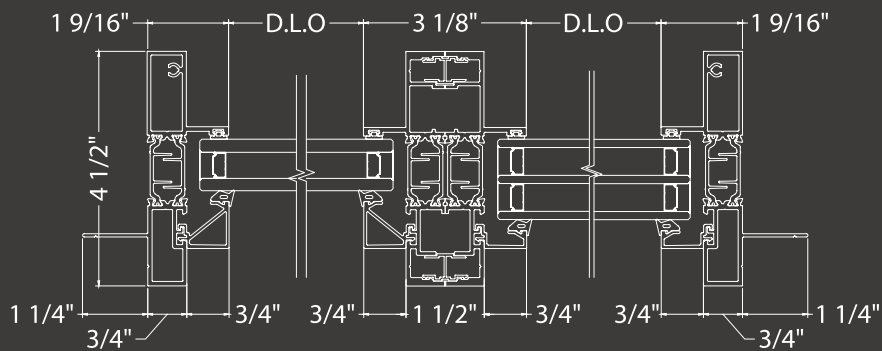
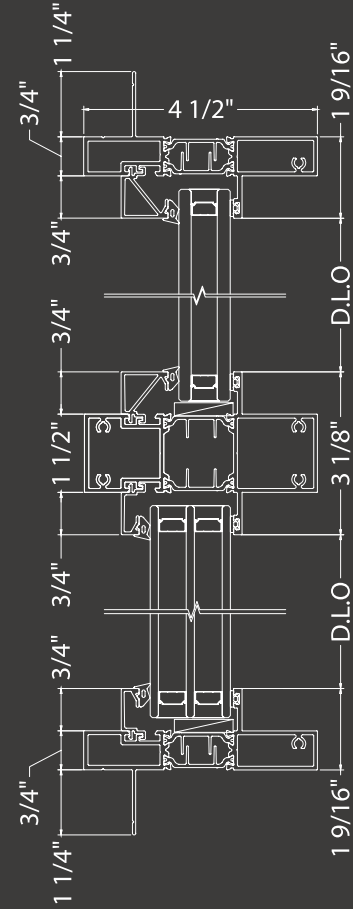
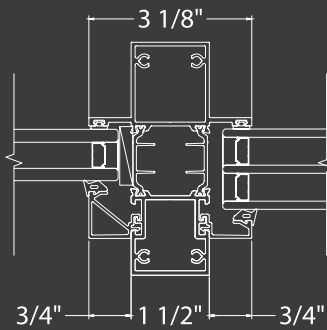
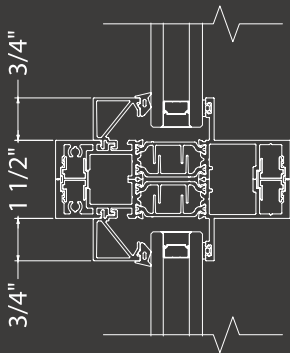
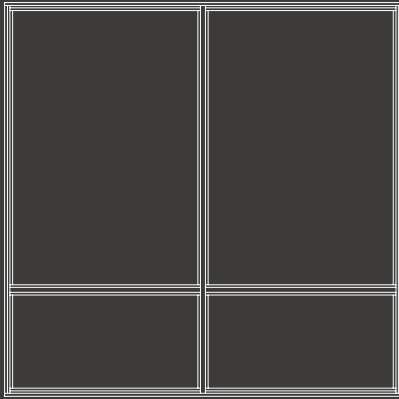


ES-LG225

Window Wall



[Learn More](#)



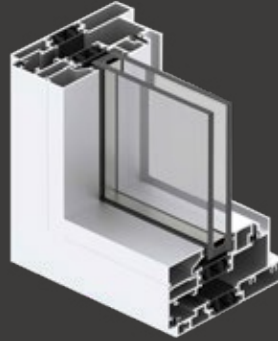




ES-LG250

Casement/ Awning Window

Sleek, versatile, and thermally enhanced, the ES-LG250 offers refined functionality with a minimalist profile. Its clean lines and flexible design make it ideal for both contemporary and timeless architecture.



Performance & Highlights

- Casement and Awning configuration
- Maximum panel size:
 - Casement:
 - 42" width x 72" height
 - 36" width x 84" height
 - Awning: 72" width x 36" height
- Vertical lock:
 - 60" width x 48" height
 - 38" width x 84" height
- Frame depth: 4-1/2"
- Sightline: 2-1/2"
- Design load: +/-40 psf
- U-Value as low as:
 - Casement: 0.26
 - Awning: 0.27
 - U-Value SB70 #2 (Foam): 0.28
- AAMA Rating GW-40
 - 0.27 (3/16" Clear SB70 #2 + 1/2" TPS 90% Argon + 3/16" Clear + 1/2" TPS 90% Argon + 3/16" Low-E Pilkinton #6)

Features

- Thermal break system for improved performance and insulation
- Available with nail fin anchor
- Stackable (modular) mullion to snap in with Legacy Line systems
- Euro-groove to fit multiple hardware options
- Optional roto-operator to meet ADA requirements

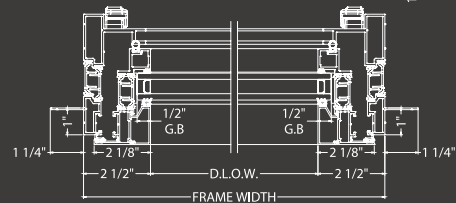
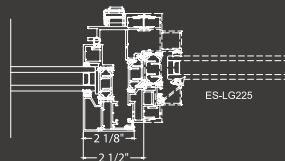
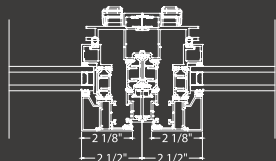
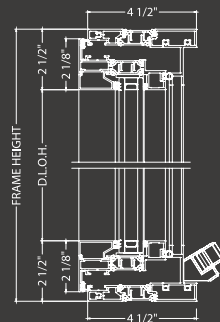
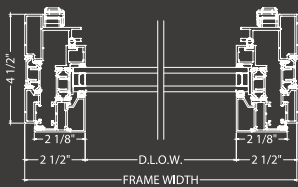
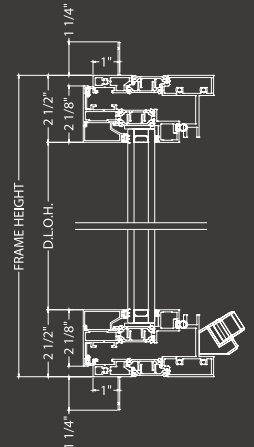
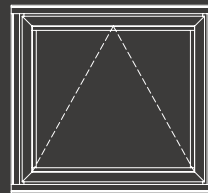
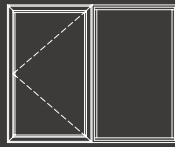
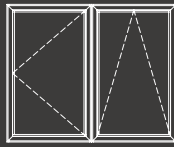
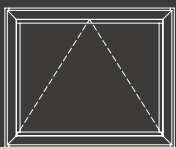
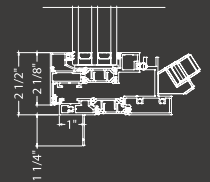
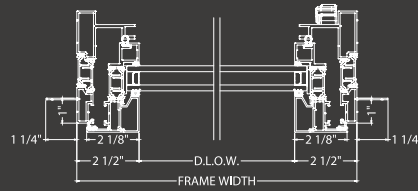
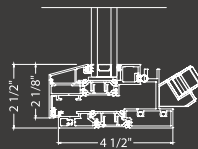
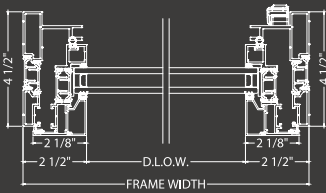
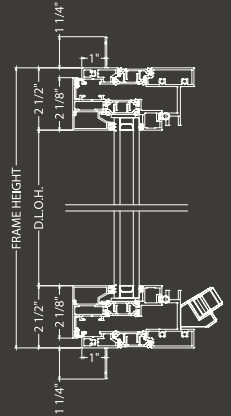
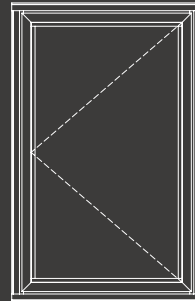
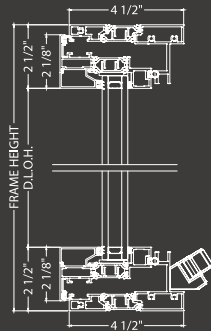
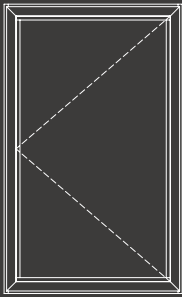


ES-LG250

Casement/ Awning Window



Learn More





Color and Finishes

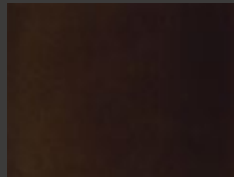
Color Options (AAMA 2605)



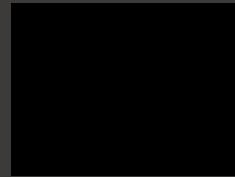
Clear Anodized



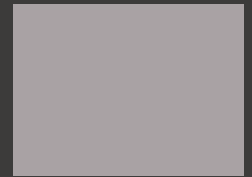
Black Anodized



Bronze Anodized



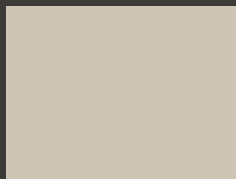
Black



Silver



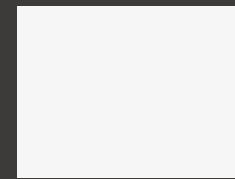
Birchmount Grey



Synchronicity Beige



Champagne Bronze



White

Woodgrain Finishes



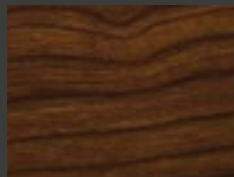
Mahogany

DS721 SU + 81441/01 L4



Nogal

DS733 SU + 81806/05 L4



Teka

DS733 SU + 82601/01 L4



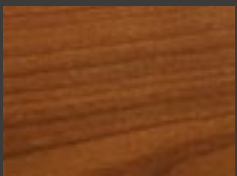
White Oak

DS745 SU + 82513/04 L4



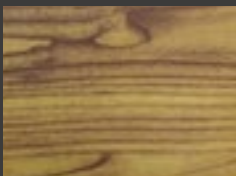
Pine

17G-916-A040 + 81406/01 L4



Golden Pecan

17G-937-A040 + 81407-01 L4



Olive

DS718S + 81109/04 L4

Accessories

Every window and door is produced with the finest materials, using the latest technologies and benefiting from the skilled talent of our experienced team. The result is an timeless design with engineered precision and proven performance.

Flush Mount Handle

ES-LG850



Peak Handle

ES-LG525

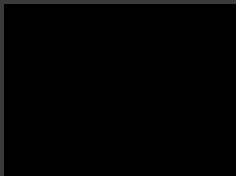


Ladder Pull

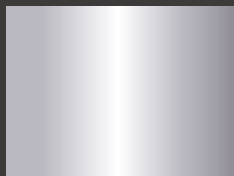
ES-LG550



Hardware Finishes



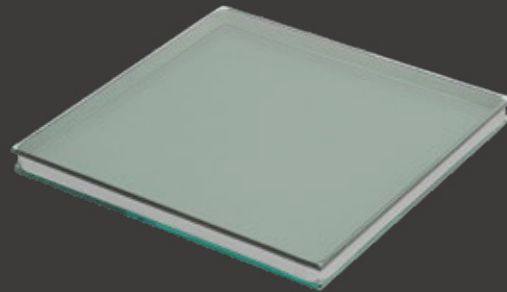
Black



Satin

Glass Options That Go Beyond

Our Legacy Line features SB70 high-performance insulated glass with Argon for exceptional energy efficiency and comfort. Every pane is tempered for strength and engineered for lasting clarity and protection.



Key Features

- SB70 with Argon Insulation – Advanced thermal performance for year-round comfort.
- Tempered Glass – Enhanced strength and safety in every pane.
- 1/4" / 1/4" Thickness Option – Added robustness and stability, exceeding typical industry standards.
- Laminated Glass Option – Superior sound reduction and added security.

Our glass is part of the legacy, from strength to silence to year-round comfort.

New Designs are on the Horizon.

- Patio Door
- Sliding Window



Find us Across the U.S.

Explore our nationwide presence and find the nearest showroom to experience our products up close.



ES Showrooms

Miami, FL

645 W Hallandale Beach Blvd, Hallandale Beach, FL

Naples, FL

3401 Bonita Bch Rd, Bonita Springs, FL

Destin, FL

12889 Emerald Coast Pkwy, Miramar Beach, FL

New York City, NY

100 Crosby 502, New York City, NY

Charleston, SC

525 King Street, Charleston, SC

Chandler, AZ

2700 S Gilbert Rd Ste 5, Chandler, AZ

Orange, CA

216 E Chapman Ave, Orange, CA

Houston, TX

7026 Old Katy Rd, Houston, TX

The information contained herein is the exclusive property of ES, which reserves the right to modify it, including but not limited to designs and specifications, without prior notice.

©2026 ES. All rights reserved.

V-April 2026

**imagine
extraordinary**

www.eswindows.com

ES